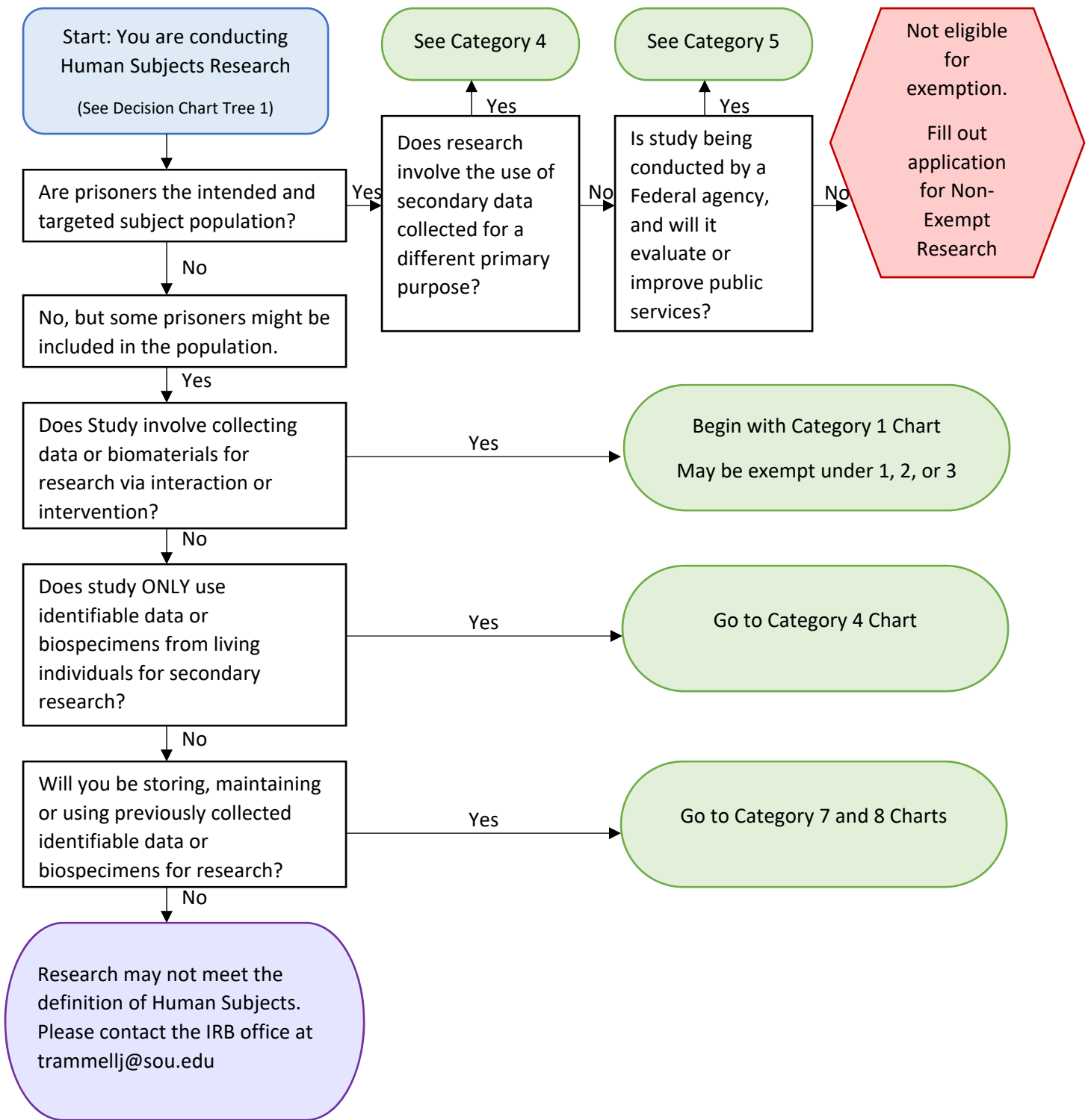


## Is Your Human Subjects Research Eligible for Exemption?

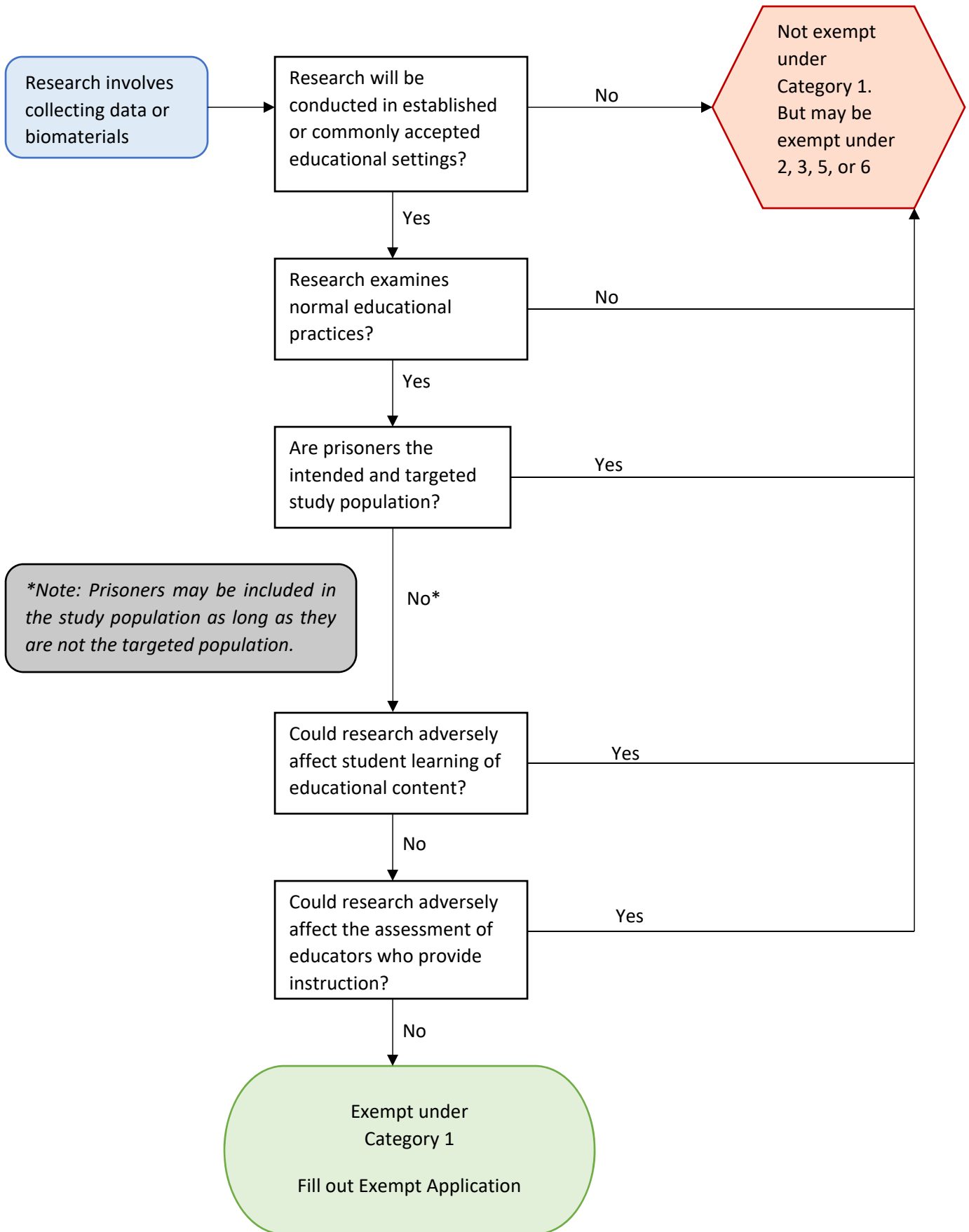


**NOTE:**

1. A IRB Request for Review application must be submitted to the IRB office regardless of exempt self-determination.
2. Researchers may not make self-determination of exemption from IRB review. All research involving human subjects must be reviewed by SOU's IRB office, and granted either an Exemption or Approval before study procedures may begin.
3. In order for the research to be eligible for exemption, the only involvement of human participants in the research must fall into one or more of the exemption categories.
4. Definitions and other resources are on the IRB website [www.sou.edu/irb](http://www.sou.edu/irb)

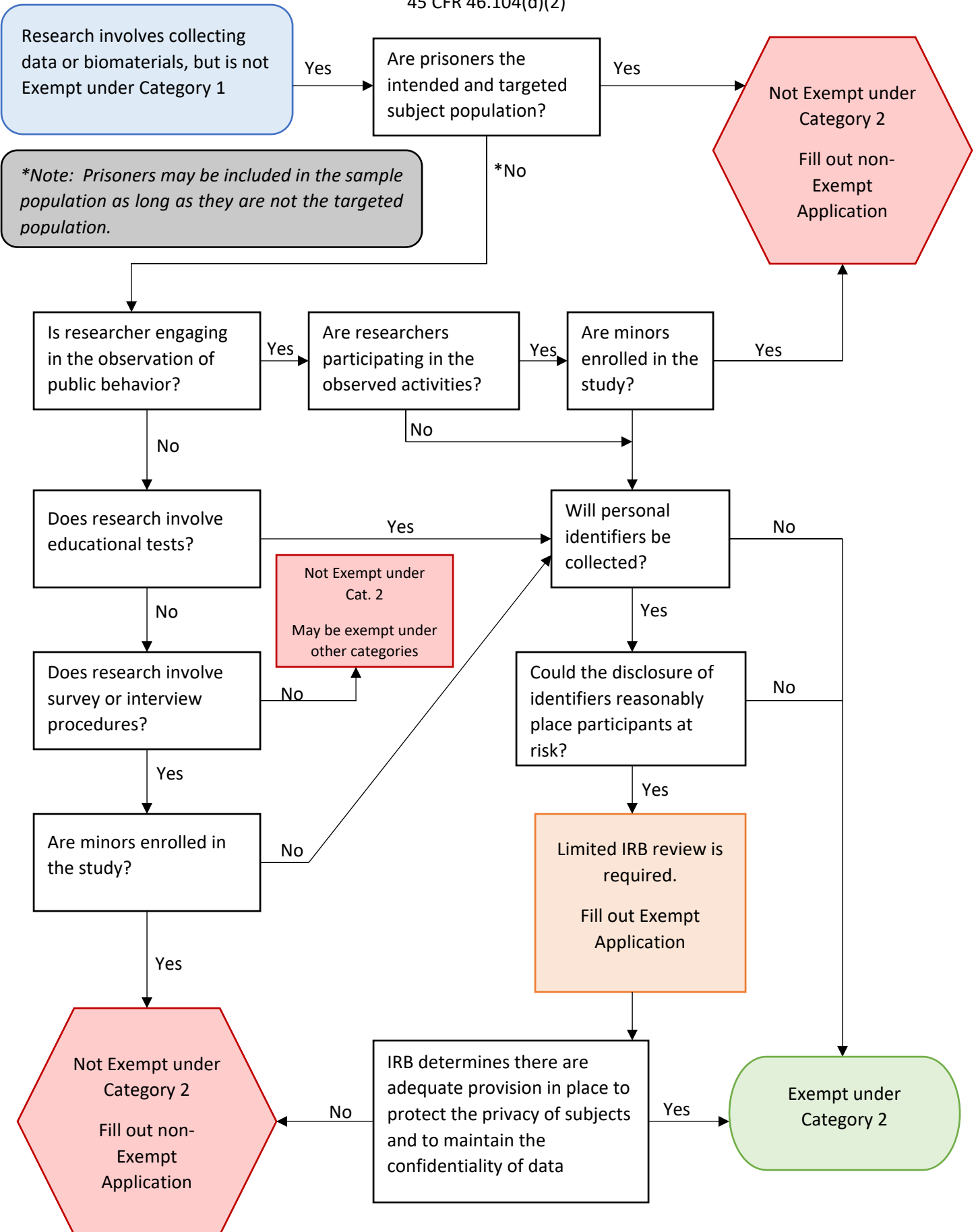
# Educational Practices: Does Exemption Category 1 Apply to Your Research?

45 CFR 46.104(d)(1)



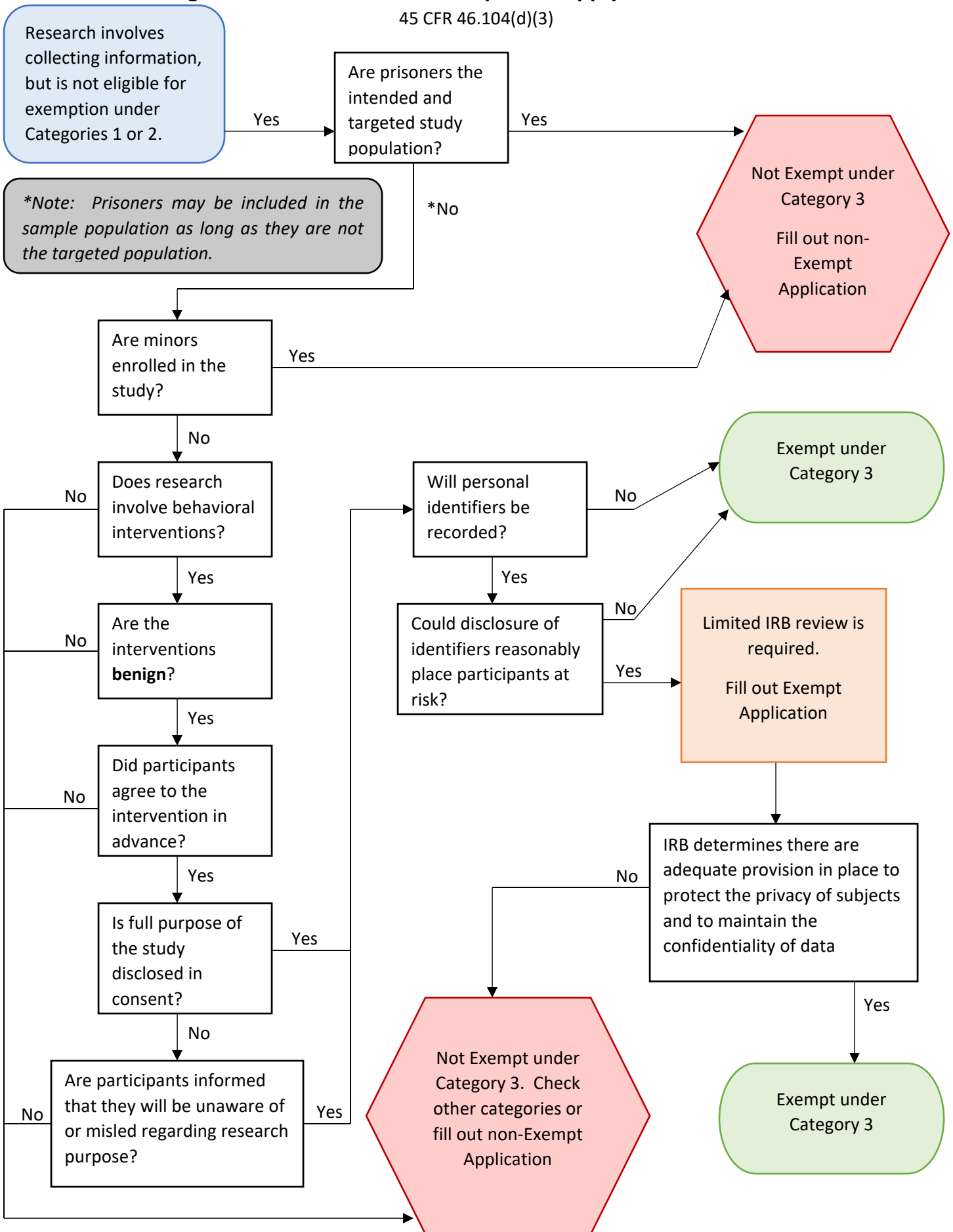
# Surveys, Tests, or Observations: Does Exemption 2 Apply to Your Research?

45 CFR 46.104(d)(2)



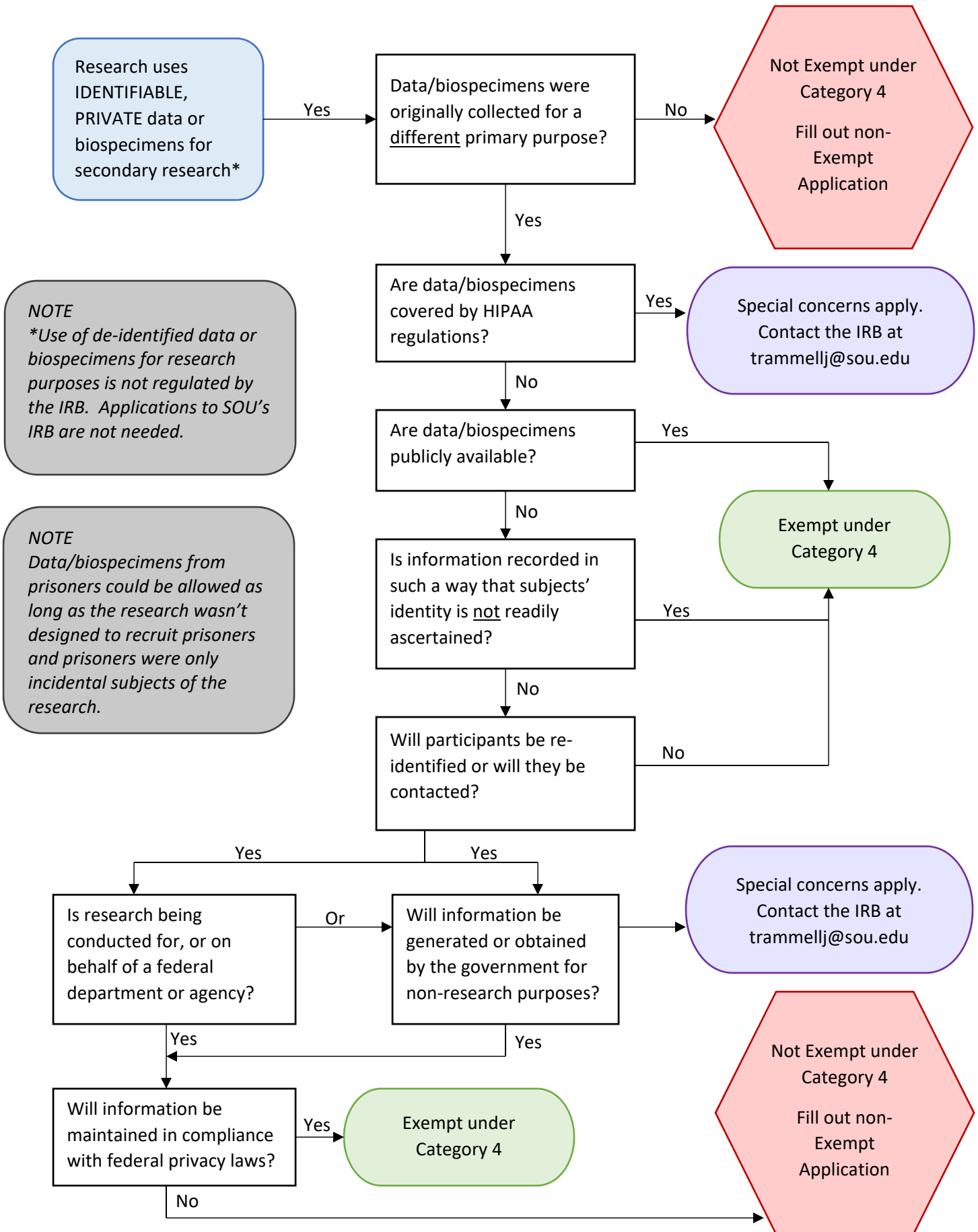
# Benign Interventions: Does Exemption 3 Apply to Your Research?

45 CFR 46.104(d)(3)



## Secondary Research: Does Exemption 4 Apply to Your Research?

45 CFR 46.104(d)(4)

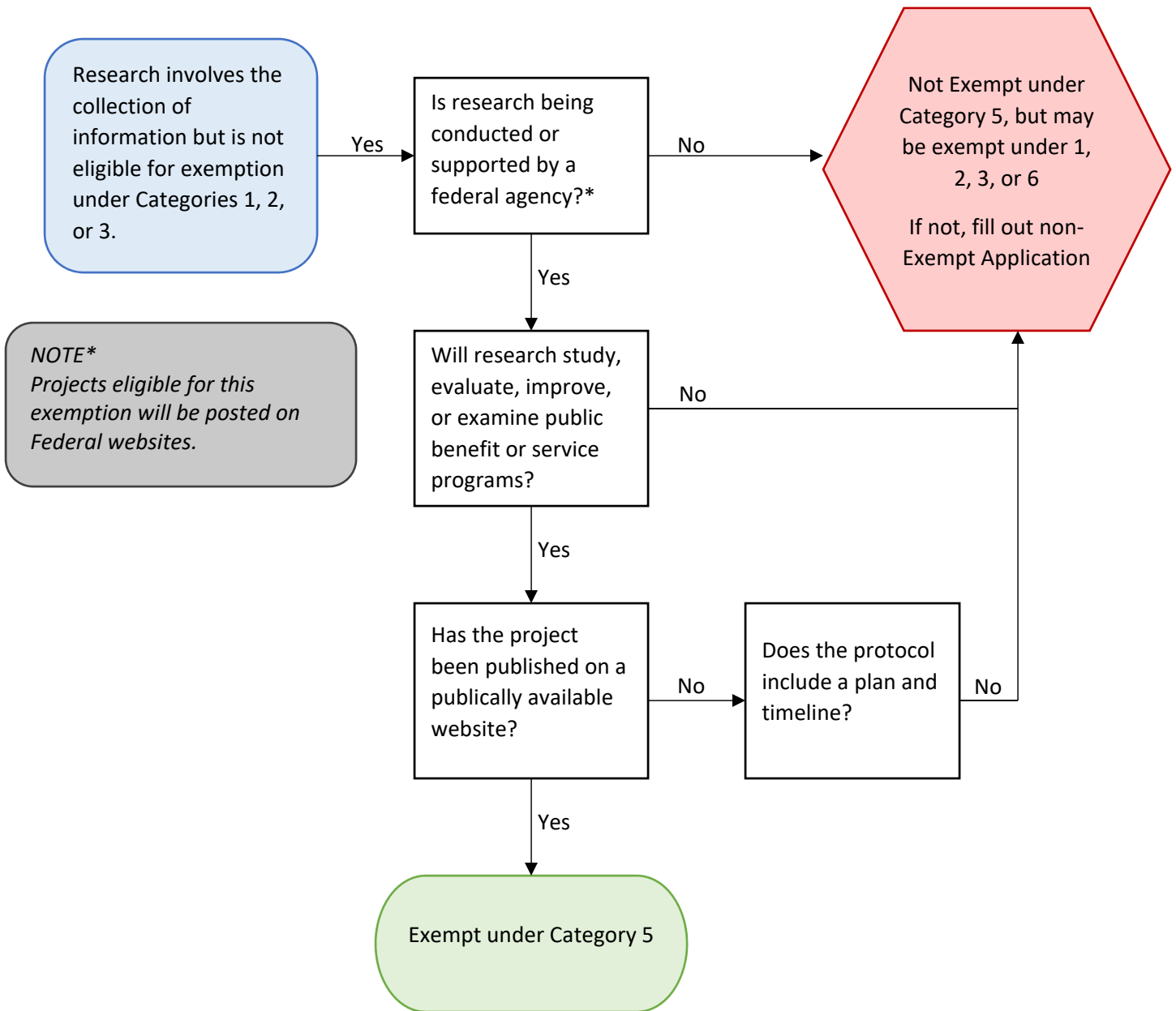


**NOTE**  
\*Use of de-identified data or biospecimens for research purposes is not regulated by the IRB. Applications to SOU's IRB are not needed.

**NOTE**  
Data/biospecimens from prisoners could be allowed as long as the research wasn't designed to recruit prisoners and prisoners were only incidental subjects of the research.

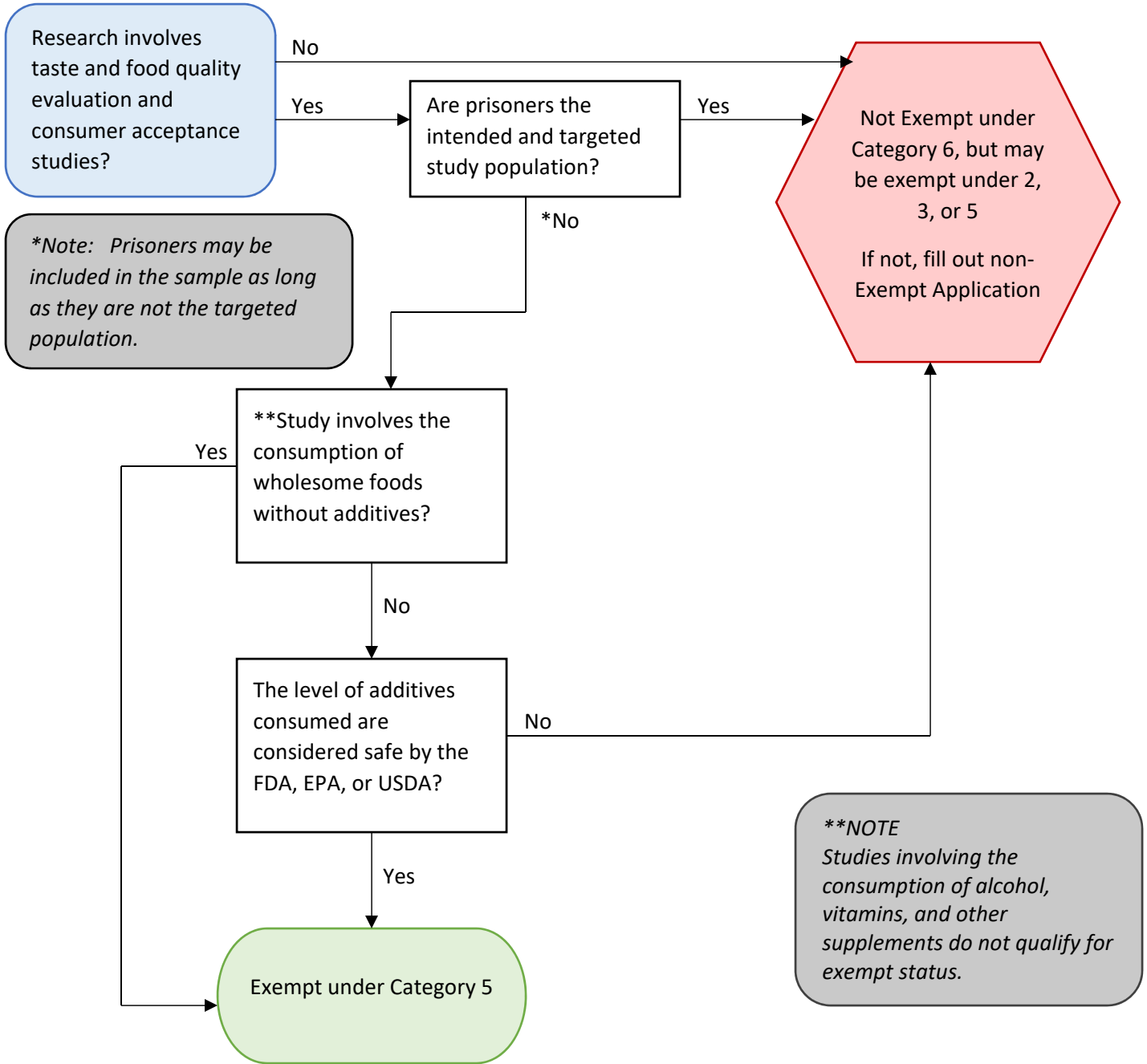
# Public Health or Service Research: Does Exemption 5 Apply to Your Research?

45 CFR 46.104(d)(5)



# Food and Taste Evaluation: Does Exemption 6 Apply to Your Research?

45 CFR 46.104(d)(6)



## Storage, Maintenance, or Use of Secondary Data with Identifiers: Do Exemptions 7 or 8 Apply to Your Research?

45 CFR 46.104(d)(7,8)

Note: These exemption provisions carry significant requirements for documenting or waiving Broad Consent and for ensuring privacy of subjects and confidentiality of data. The SOU IRB recommends that projects involving secondary use of identifiable private data or biospecimens that cannot be exempted under Category 4, are reviewed by the SOU IRB via the non-exempt review process and granted IRB approval. Contact the IRB with questions at [trammellj@sou.edu](mailto:trammellj@sou.edu)

